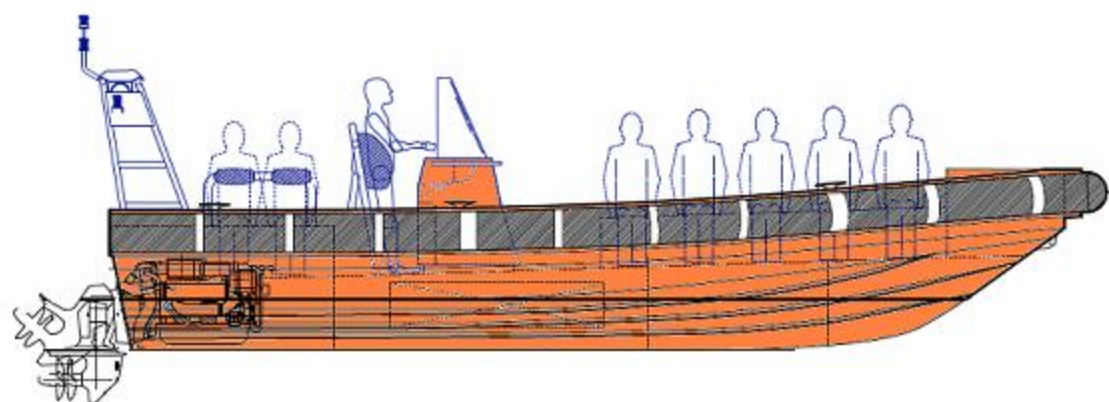


9.00 METER S.A.R. CRAFT



PRINCIPLE DIMENSIONS:

Length Overall (Hull)	9.000	meters
Length (Hull Moulded)	8.850	meters
Length at Waterline	7.240	meters
Beam (Overall)	3.500	meters
Beam (Hull Moulded)	3.210	meters
Hull Draft (Moulded - Light Ship)	0.450	meters
Hull Draft (Propellers)	0.650	meters
Depth (Moulded)	NA	meters
Distance between Hulls Centreline	NA	meters
Weight	3.500	tonnes
Material	Aluminium	

PAYLOAD & CAPACITIES:

Passengers	15	
Crew	2	
Fuel	600	litres
Water	NA	litres
Sullage	NA	litres

PROPULSION:

Main Engines (Type)	1 x 350 HP
Propulsion	Stern Drive
Propellers	Supplied by Manufacturer

DESIGNER & CLASS:

Designer	Mark Ellis Marine Design
Indian Register of Shipping (IR Class)	Drawings Construction (Optional Extra)

PERFORMANCE:

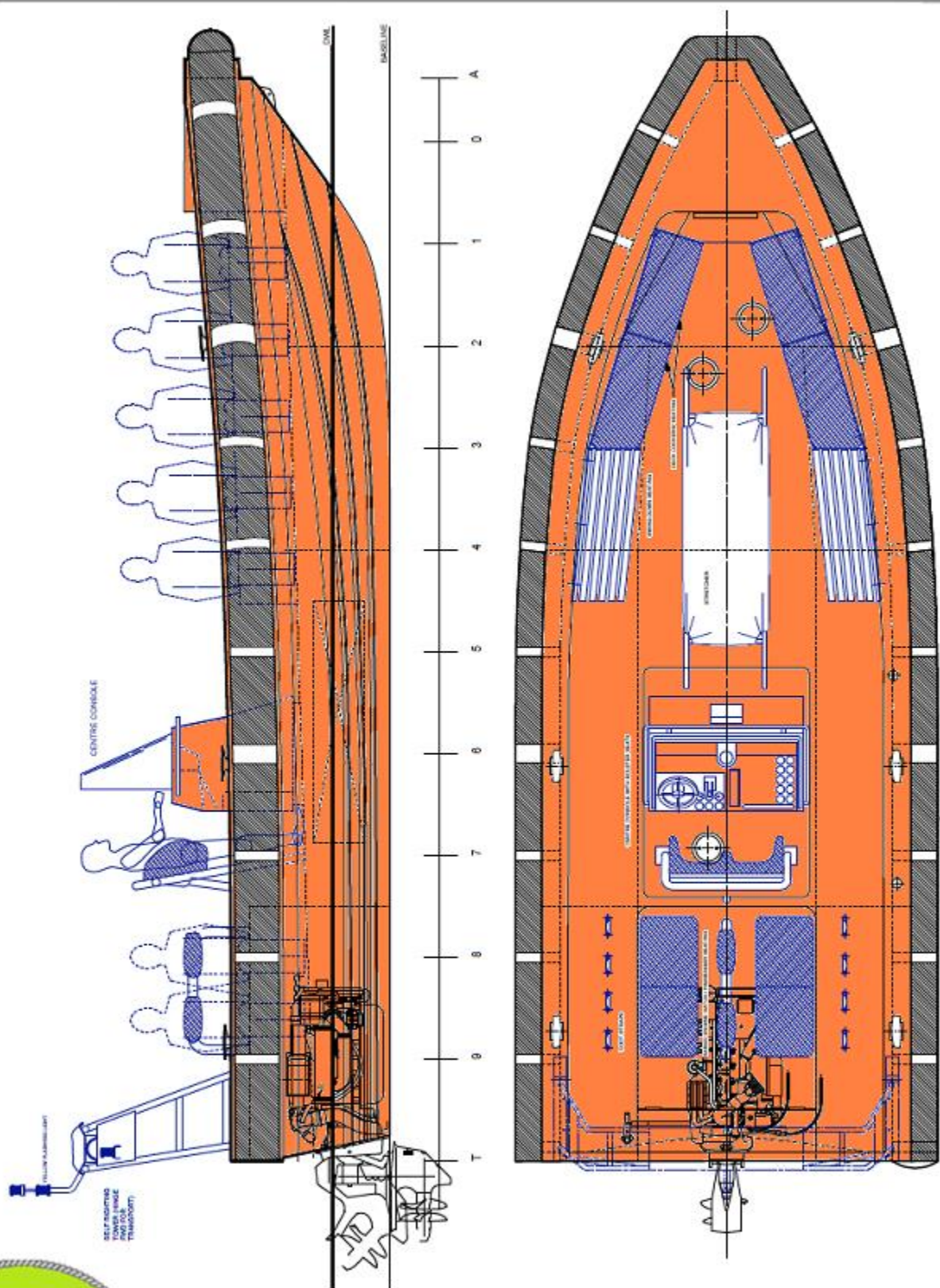
Speed	100% Loaded	30	Knots (100% MCR)
	100% Loaded	27	Knots (80%-85% MCR)



RESPONSE CRAFT

www.commuter-craft.com
sales@commuter-craft.com

9.00 METER S.A.R. CRAFT



RESPONSE
CRAFT

www.commuter-craft.com
sales@commuter-craft.com