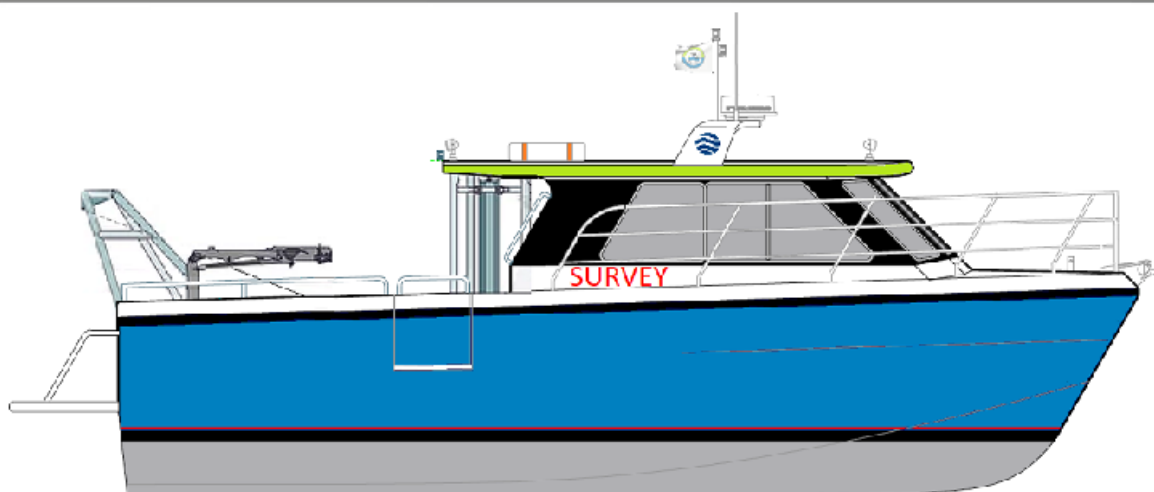


10.00 METER HYDROGRAPHIC CATAMARAN



PRINCIPLE DIMENSIONS:

Length Overall (Hull)	10.300	meters
Length (Hull Moulded)	10.000	meters
Length at Waterline	8.850	meters
Beam (Overall)	4.500	meters
Beam (Hull Moulded)	4.200	meters
Hull Draft (Moulded - Light Ship)	0.600	meters
Hull Draft (Propellers)	1.200	meters
Freeboard (loaded)	1.450	meters
Depth (Moulded)	1.458	meters
Distance between Hulls Centreline	2.700	meters
Depth (Moulded)	2.100	meters
Material	GRP	

PAYLOAD & CAPACITIES:

Hydrographer	2	
Crew	2	
Fuel	800	litres
Water	100	litres
Sullage	100	litres

PROPULSION:

Main Engines (Type)	2 x 272 HP
Propulsion	Conventional Drives
Propellers	Fixed Pitch Propellers

DESIGNER & CLASS:

Designer	Mark Ellis Marine Design (Australia)
Indian Register of Shipping (IR Class)	Drawings Construction (Optional Extra)

PERFORMANCE:

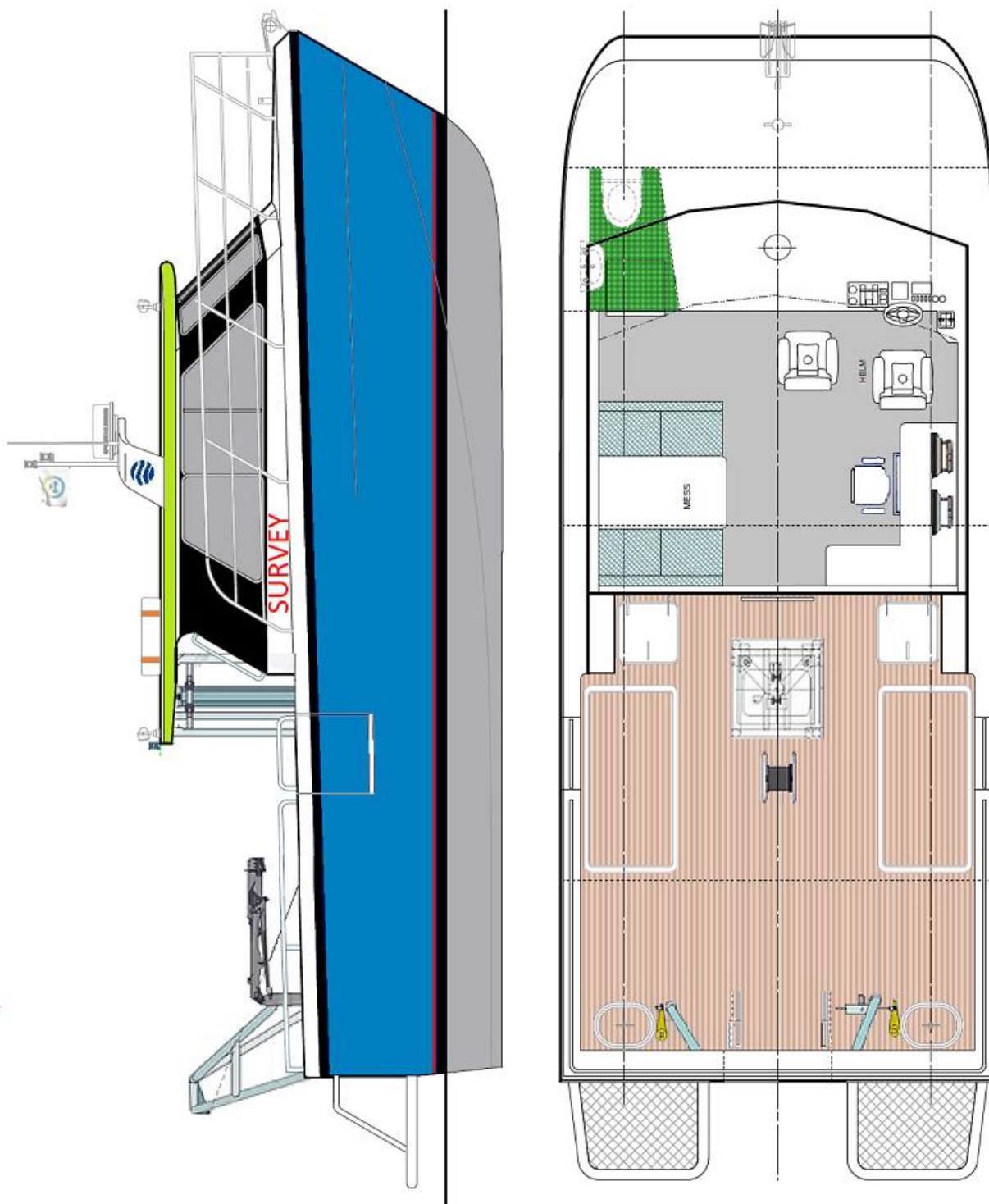
Speed	100% Loaded	25	Knots (100% MCR)
	100% Loaded	20	Knots (80%~85% MCR)



COMMUTER CRAFT

www.commuter-craft.com
sales@commuter-craft.com

10.00 METER HYDROGRAPHIC CATAMARAN



COMMUTER
CRAFT

www.commuter-craft.com
sales@commuter-craft.com