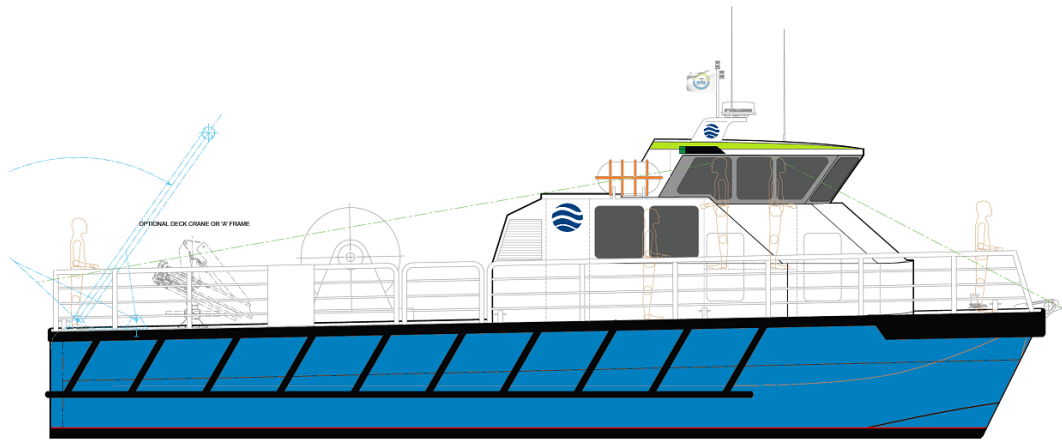


# 16.50 METER O.S.R. CATAMARAN



## PRINCIPLE DIMENSIONS:

Length Overall (Hull)	16.900	meters
Length (Hull Moulded)	16.500	meters
Length at Waterline	15.400	meters
Beam (Overall)	5.600	meters
Beam (Hull Moulded)	5.500	meters
Hull Draft (Moulded - Light Ship)	0.900	meters
Hull Draft (Loaded)	1.500	meters
Depth (Moulded)	2.720	meters
Distance between Hulls Centreline	4.258	meters
Freeboard (Loaded)	1.550	meters
Freeboard (Lightship)	1.500	meters

## PAYLOAD & CAPACITIES:

Vessel Crew	2	
Oil Spill Response Crew	3	
Dispersants	15000	litres
Fuel	3000	litres
Water	500	litres
Sullage	250	litres

## PROPULSION:

Main Engines (Type)	2 x 600 HP (Inboard Diesel Engines)
Propulsion	Fixed Pitch Propellers
Propellers	Teignbridge Propellers

## DESIGNER & CLASS:

Designer	Mark Ellis Marine Design
Indian Register of Shipping (IR Class)	Drawings Construction (Optional Extra)

## PERFORMANCE:

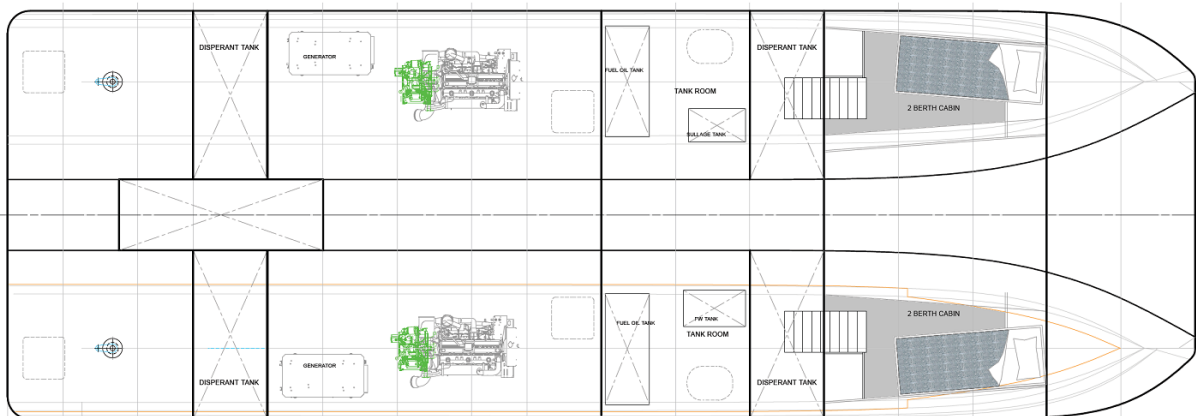
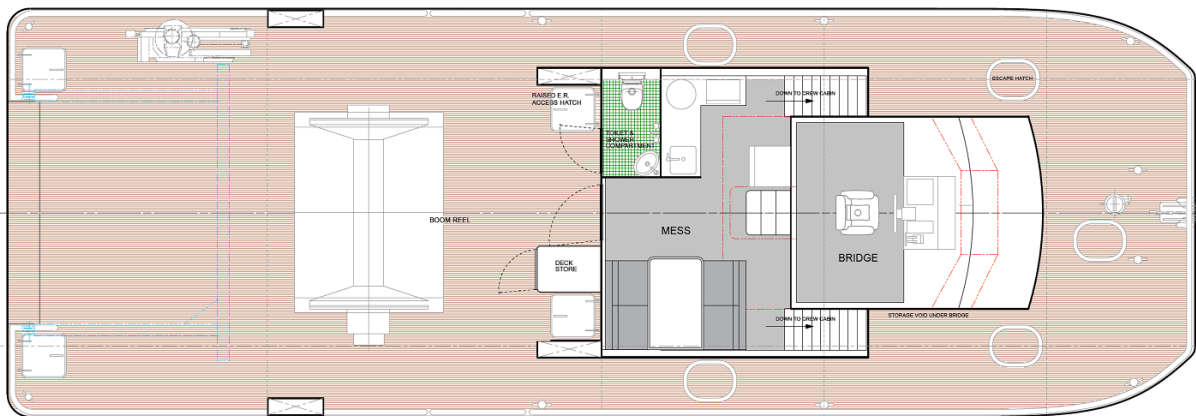
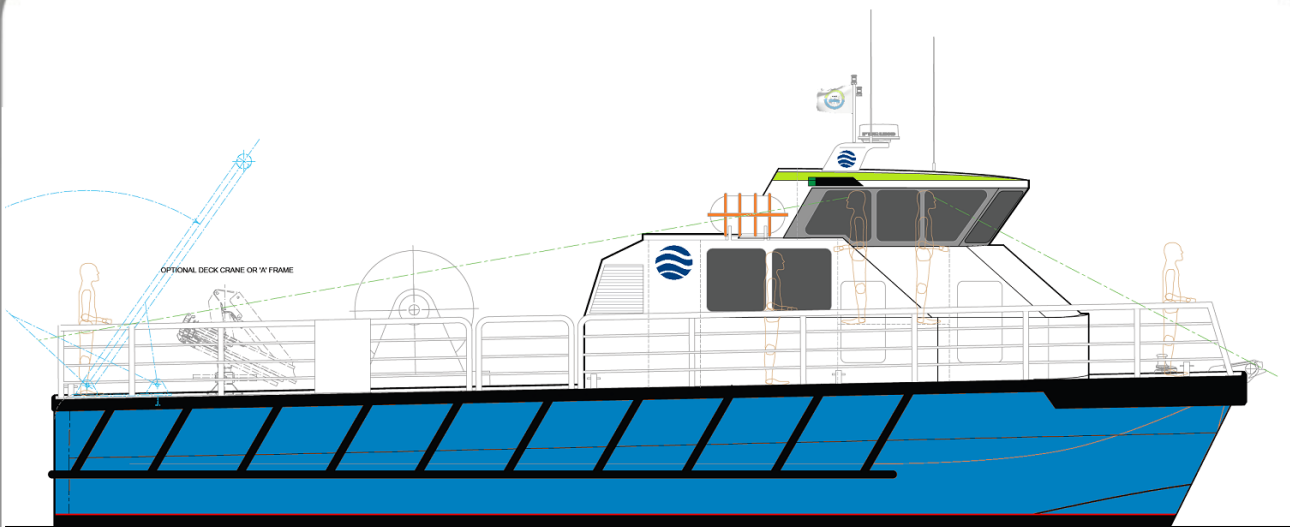
Speed	100% Loaded	25	Knots (100% MCR)
	100% Loaded	22	Knots (80%-85% MCR)



# RESPONSE CRAFT

[www.commuter-craft.com](http://www.commuter-craft.com)  
[sales@commuter-craft.com](mailto:sales@commuter-craft.com)

# 16.50 METER O.S.R. CATAMARAN



**RESPONSE**  
**CRAFT**

[www.commuter-craft.com](http://www.commuter-craft.com)  
[sales@commuter-craft.com](mailto:sales@commuter-craft.com)