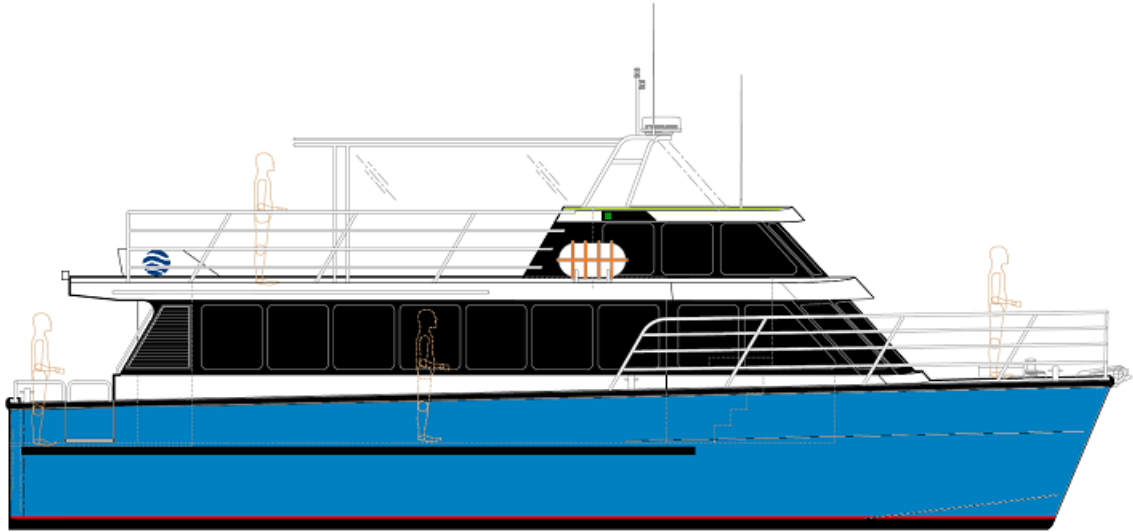


15.00 METER TOURIST CATAMARAN



PRINCIPLE DIMENSIONS:

Length Overall	15.000	meters
Length (Hull Moulded)	15.000	meters
Length at Waterline	13.900	meters
Beam (Overall)	5.500	meters
Beam (Hull Moulded)	1.642	meters
Hull Draft (Moulded - Loaded)	0.900	meters
Hull Draft (Propellers)	1.500	meters
Depth (Moulded)	2.720	meters
Distance between Hulls Centreline	3.858	meters
Freeboard Stern (Loaded)	1.150	meters

PAYLOAD & CAPACITIES:

Passengers	60	
Crew	4	
Fuel	2000	litres
Water	500	litres
Sullage	300	litres

PROPULSION:

Main Engines (Type)	2 x 600 HP (Inboard Diesel Engines)
Propulsion	Fixed Pitch Propellers
Gear Box	Supplied by Engine Manufacturer

DESIGNER & CLASS:

Designer	Mark Ellis Marine Design
Indian Register of Shipping (IR Class)	Drawings Construction (Optional Extra)

PERFORMANCE:

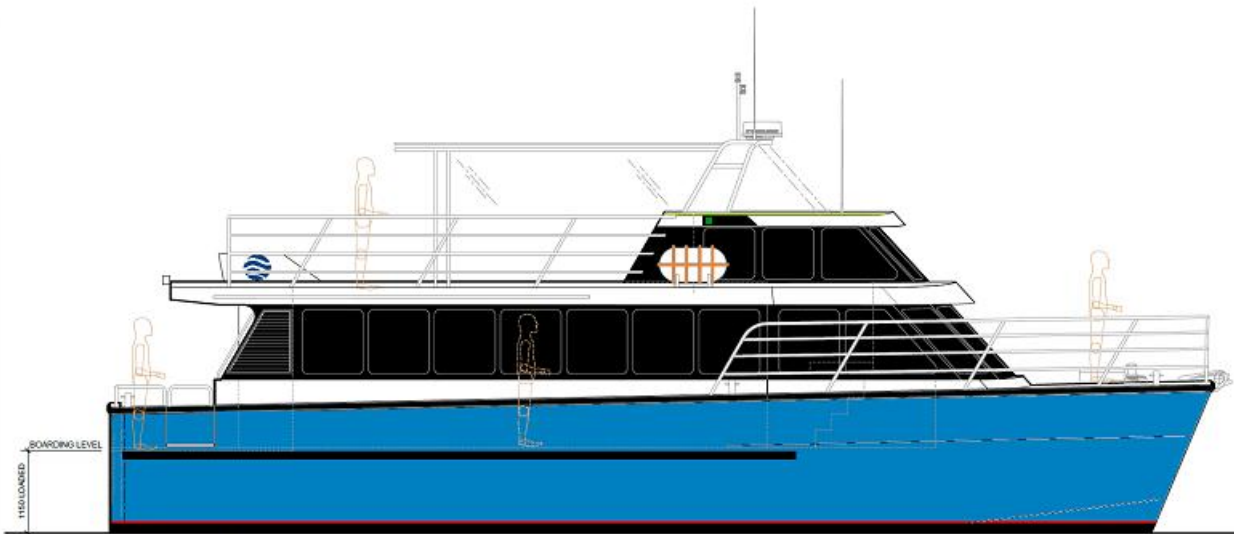
Speed	100% Loaded	25	Knots (100% MCR)
	100% Loaded	23	Knots (85% MCR)



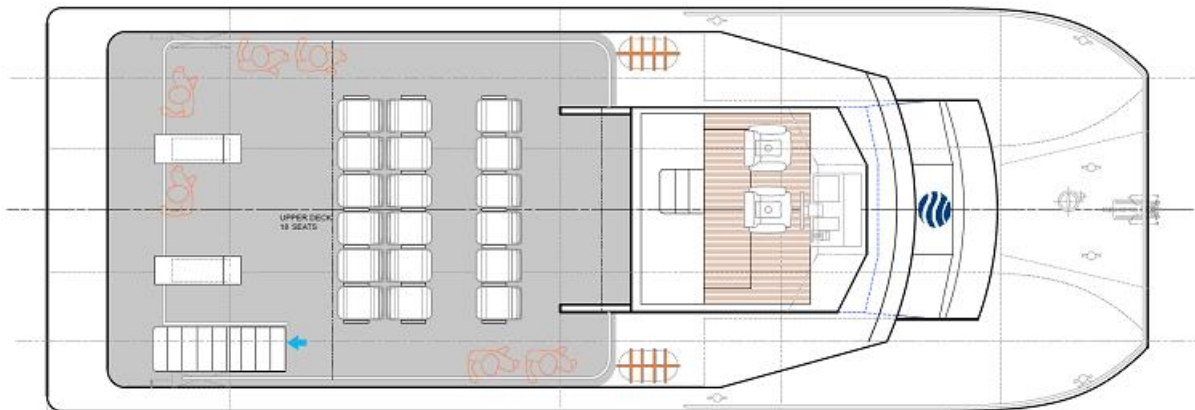
COMMUTER CRAFT

www.commuter-craft.com
sales@commuter-craft.com

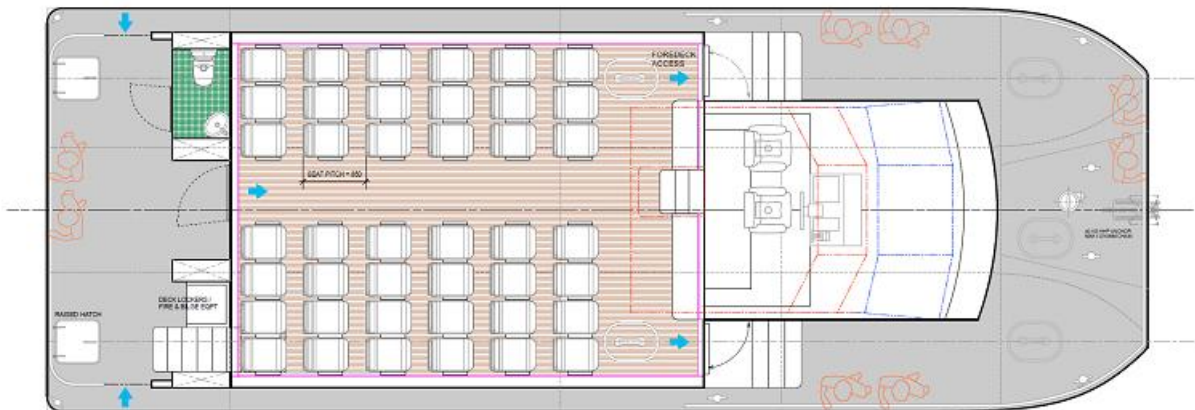
15.00 METER TOURIST CATAMARAN



OUTBOARD PROFILE



UPPER DECK PLAN



MAIN DECK PLAN



COMMUTER
CRAFT

www.commuter-craft.com
sales@commuter-craft.com