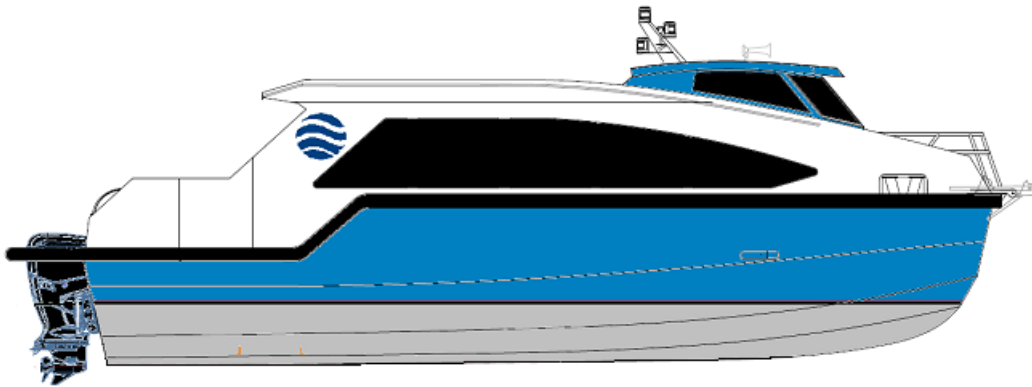


13.00 METER 32 PASSENGER CATAMARAN



PRINCIPLE DIMENSIONS:

Length Overall	13.000	meters
Length (Hull Moulded)	12.014	meters
Length at Waterline	11.200	meters
Beam (Overall)	5.850	meters
Beam (Hull Moulded)	1.642	meters
Hull Draft (Moulded - Light Ship)	0.700	meters
Hull Draft (Moulded - Loaded)	0.750	meters
Depth (Moulded)	1.420	meters
Distance between Hulls Centreline	3.622	meters
Freeboard (Loaded)	1.507	meters
Freeboard (Lightship)	1.557	meters
Height (Mast Down)	3.881	meters

PAYLOAD & CAPACITIES:

Passengers	32	
Crew	3	
Fuel	600	litres
Water	100	litres
Sullage	100	litres

PROPULSION:

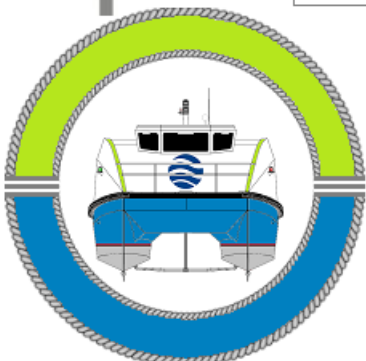
Main Engines (Type)	2 x 200 HP (Outboard Motors)
Propellers	By OBM Supplier

PERFORMANCE:

Speed	100% Loaded	26	Knots (100% MCR)
	100% Loaded	24	Knots (81% MCR)
Speed (with Hydrofoils)	100% Loaded	31	Knots (100% MCR)
	100% Loaded	29	Knots (81% MCR)

DESIGNER & CLASS:

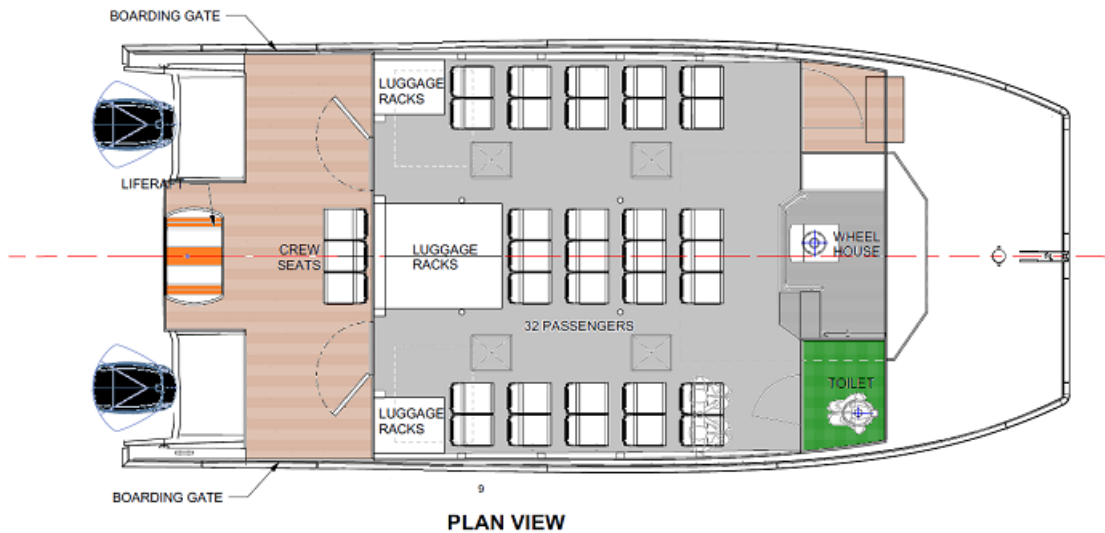
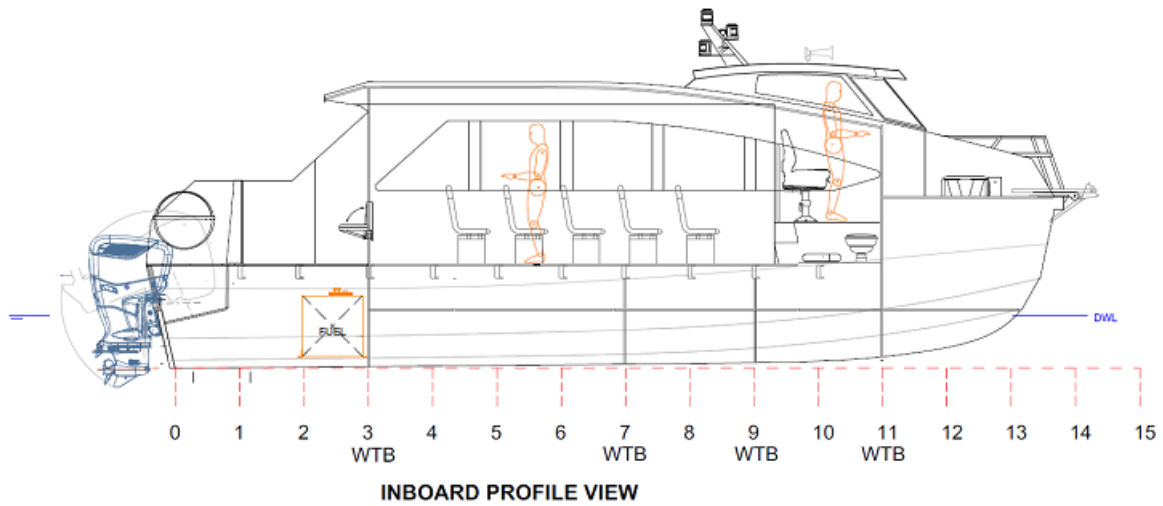
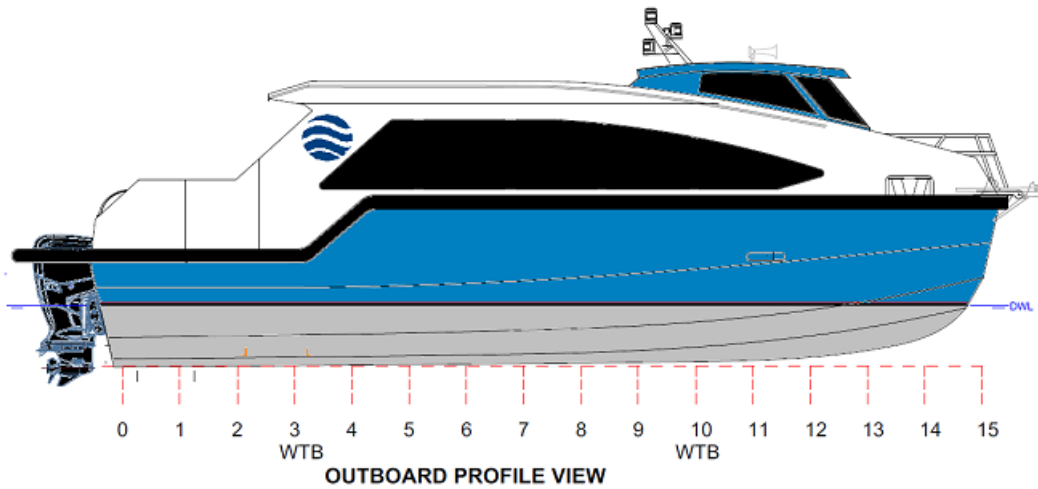
Designer	Icarus Marine Pty. Limited
Bureau Veritas Class (BV Class)	Drawings (Included in the Quotation) Construction (Optional Extra)



COMMUTER CRAFT

www.commuter-craft.com
sales@commuter-craft.com

13.00 METER 32 PASSENGER CATAMARAN



COMMUTER CRAFT

www.commuter-craft.com
sales@commuter-craft.com