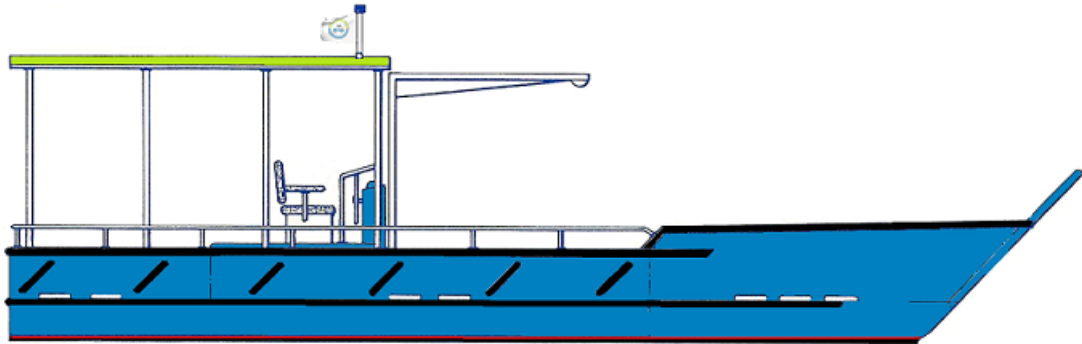


10.50 METER LANDING BARGE



PRINCIPLE DIMENSIONS:

| | | |
|-----------------------------------|-----------|--------|
| Length Overall (Hull) | 10.600 | meters |
| Length (Hull Moulded) | 10.500 | meters |
| Length at Waterline | 9.300 | meters |
| Beam (Overall) | 3.600 | meters |
| Beam (Hull Moulded) | 3.500 | meters |
| Hull Draft (Moulded - Light Ship) | 0.500 | meters |
| Hull Draft (Propellers) | 0.750 | meters |
| Depth (Moulded) | NA | meters |
| Distance between Hulls Centreline | NA | meters |
| Freeboard (Loaded) | 1.450 | meters |
| Freeboard (Lightship) | 1.500 | meters |
| Material | Aluminium | |

PAYLOAD & CAPACITIES:

| | | |
|------------|------|-----------|
| Passengers | 8 | |
| Crew | 2 | |
| Cargo | 6500 | kilograms |
| Fuel | 500 | litres |
| Water | NA | litres |
| Sullage | NA | litres |

PROPULSION:

| | |
|---------------------|---------------------------------|
| Main Engines (Type) | 1 x 65 HP |
| Propulsion | Fixed Pitch Propellers |
| Propellers | Supplied by Engine Manufacturer |

DESIGNER & CLASS:

| | |
|--|---|
| Designer | Mark Ellis Marine Design |
| Indian Register of Shipping (IR Class) | Drawings Construction (Optional Extra) |

PERFORMANCE:

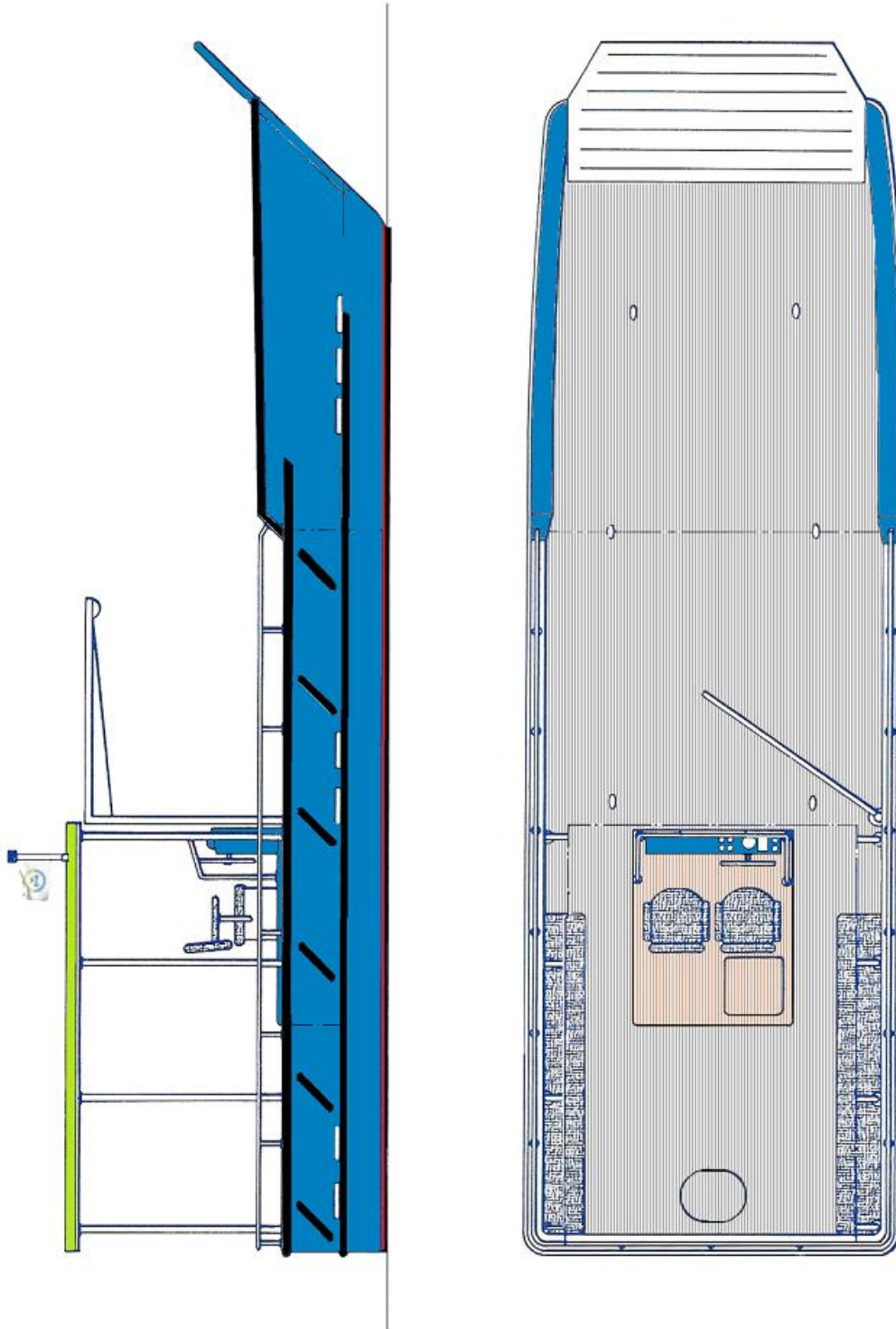
| | | | |
|-------|-------------|----|---------------------|
| Speed | 100% Loaded | 10 | Knots (100% MCR) |
| | 100% Loaded | 8 | Knots (80%~85% MCR) |



COMMUTER CRAFT

www.commuter-craft.com
sales@commuter-craft.com

10.50 METER LANDING BARGE



COMMUTER
CRAFT

www.commuter-craft.com
sales@commuter-craft.com